

Leica iCON CC80

Rugged, lightweight controller
for uncompromising site work



icon
intelligent construction

Leica iCON CC80 controller is the world's thinnest and lightest fully-rugged 7" Windows® tablet. It is built to enable easy, mobile work on-site and increase worker productivity without compromise. Powered by Windows® 8.1 Pro and an Intel® Core i5 processor, Leica iCON CC80 features a long life, user-replaceable battery and a daylight readable multi-touchscreen with high sensitivity for easy operation in all conditions. With the broad range of iCON software configuration options and flexible communication, the iCON CC80 is the ideal controller for site workers and foremen.

- Large 7" sunlight readable multi-touchscreen for convenient operation
- Microsoft Windows® 8.1 operating system, enables 3rd party applications as well
- Various wireless communication possibilities (Bluetooth®, Wi-Fi and integrated 3G/4G multi-carrier mobile broadband) for use with different sensors and internet access
- Fully rugged design for use in toughest conditions (MIL-STD-810G, IP65)
- Long life battery pack (up to 16 hours)
- Highly productive positioning work with Leica iCON site and Leica iCON build application software

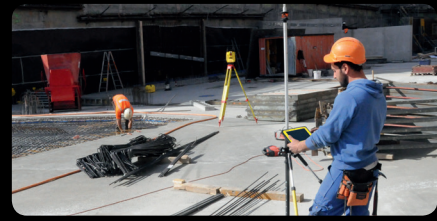


- when it has to be **right**

Leica
Geosystems

Leica iCON CC80

Rugged, mobile tablet PC



Technology

Processor & Memory	Intel® Core™ i5-4302Y vPro™ processor – 1.6GHz with Intel® Turbo Boost up to 2.3GHz – 3MB cache 4GB SDRAM (DDR3L-1333MHz)
Data Storage	128GB solid state drive (SSD) with heater
Operating System	Microsoft Windows® 8.1 Pro 64-bit
Screen	7" widescreen, 1280x800 resolution, colour TFT, 500 cd/m ² (Nits), sunlight readable resistive capacitive touch display
Keyboard & Buttons	Power button, volume button, auto-rotate button, 1 programmable button, 10-point multi-touch, supports gloved touch and gestures and capacitive stylus pen; Stylus pen with integrated holder in rotating hand strap; On-screen QWERTY soft keyboard
I/O Ports	1x USB 3.0; 1x DC power input; Docking connector (24 pin); 1x audio out, mini-jack stereo; integrated microphone and speaker

Communication

Integrated Communication Modules	Integrated 3G/4G multi-carrier mobile broadband (depending on country variant) Intel® dual band wireless AC7260 Wi-Fi 802.11a/b/g/n/ac Bluetooth® v4.0 (Class 1) + EDR
Integrated GPS	L1 GPS integrated (depending on country variant)
Integrated Camera	2MP front webcam with microphone, 5MP rear camera with auto focus and LED light
TPS 1-man-mode working range ²¹	Typical 150m (490 ft); up to 200m (650 ft) with direct line of sight

²¹ Requires long-range Bluetooth handle on TPS and Standard Bluetooth on CC80. Range varies depending on local conditions.

Power Management

Batteries	Li-Ion "Long life" battery pack: 7.2V, typical 7100mAh, minimum 6800mAh
Power	Input: 120-240 VAC, 50-60 Hz Output: 16 V DC, 3,75A
Operating Time	Long life battery pack: 16h (benchmark), 8h (max. load test) ²¹

Physical Specifications

Size	203 mm (7.98") x 132 mm (5.20") x 25 mm (0.98"), incl. Long life battery
Weight	640 g (1.41 lbs), incl. Long life battery
Water	IP65
Altitude	12,192 m (40,000 ft), MIL-STD-810G, Method 500.5, Procedure II
Operating Temperature Range	Specified: -10°C (14°F) to 50°C (122°F) Verified: -29°C (-20°F) to 60°C (140°F), MIL-STD-810G, Method 501.5/502.5, Procedure II
Storage Temperature Range	Specified: -20°C (-4°F) to 60°C (140°F) Verified: -51°C (-60°F) to 71°C (160°F), MIL-STD-810G, Method 501.5/502.5, Procedure I
Humidity	95% RH temp cycle 30°C (86°F)/60°C (140°F) MIL-STD-810G, Method 507.5, Procedure II
Drop	Free to plywood 26 drops from 1.5 m (60") MIL-STD-810G, Method 516.6, Procedure IV
Vibration	General minimum integrity and helicopter minimum integrity test, MIL-STD-810G, Method 514.6, Procedure I, II;

Accessories

External 4-bay battery charger, docking station (cradle), 12/24V vehicle charger, additional 7100mAh battery, pole and vehicle mount solutions, anti-glare screen protectors, hand strap, stylus

²¹ In continuous field operation mode, may vary with temperature, battery age etc.

Illustrations, descriptions and technical data are not binding. All rights reserved. Printed in Switzerland - Copyright Leica Geosystems AG, Heerbrugg, Switzerland, 2015. 836855en - 05.15 - INT



Leica iCON site/iCON build
Easy-to-use construction field software. Designed for construction workers.



Leica iCON gps 60
Versatile SmartAntenna for multi-purpose positioning tasks.



Leica iCON robot 60
One-person operation, saving time and increasing productivity when carrying out layout tasks and as-built checks.



Leica Builder
Intuitive, powerful and scalable manual total station series for routine construction tasks on site.



The **Bluetooth®** word mark and logos are owned by Bluetooth SIG, Inc. and any use of such marks by Leica Geosystems AG is under licence. Windows and Windows CE are a registered trademark of Microsoft Corporation. All other trademarks and trade names are those of their respective owners.

Leica Geosystems AG
Heerbrugg, Switzerland
www.leica-geosystems.com

- when it has to be **right**

